



**Ref.: 7036-1**

- movement Ronda 706B, quartz-controlled
- Hesalite crystal
- silver colored dial with black digits / markers
- stainless steel case, polished, moon phase,
- diameter: 40 mm, Height: 10 mm
- water-resistant up to 3 atm



**Ref.: 7036-3**

- movement Ronda 706B, quartz-controlled
- Hesalite crystal
- blue dial with white digits / markers
- stainless steel case, polished, moon phase,
- diameter: 40 mm, Height: 10 mm
- water-resistant up to 3 atm



**Ref.: 7037-1**

- movement Ronda 706B, quartz-controlled
- Hesalite crystal
- silver colored dial with black digits / markers
- stainless steel case, polished, moon phase,
- diameter: 36 mm, Height: 10 mm
- water-resistant up to 3 atm



**Ref.: 7037-3**

- movement Ronda 706B, quartz-controlled
- Hesalite crystal
- blue dial with white digits / markers
- stainless steel case, polished, moon phase,
- diameter: 36 mm, Height: 10 mm
- water-resistant up to 3 atm





**Ref.: 7037M-1**

- movement Ronda 706B, quartz-controlled
- Hesalite crystal
- silver colored dial with black digits / markers
- stainless steel case, polished, moon phase,
- diameter: 36 mm, Height: 10 mm
- water-resistant up to 3 atm



**Ref.: 7038-1**

- movement Ronda 706B, quartz-controlled
- Hesalite crystal
- silver colored dial with black digits / markers
- stainless steel case, polished, gold coated, moon phase,
- diameter: 40 mm, Height: 10 mm
- water-resistant up to 3 atm



**Ref.: 7038-3**

- movement Ronda 706B, quartz-controlled
- Hesalite crystal
- blue and black dial with white digits / markers
- stainless steel case, polished, rose gold coated, moon phase,
- diameter: 40 mm, Height: 10 mm
- water-resistant up to 3 atm





**Ref.: 7039-1**

- movement Ronda 706B, quartz-controlled
- Hesalite crystal
- silver colored dial with blue digits / markers
- stainless steel case, polished, gold coated, moon phase,
- diameter: 36 mm, Height: 10 mm
- water-resistant up to 3 atm





**Ref.: 7039-3**

- movement Ronda 706B, quartz-controlled
- Hesalite crystal
- blue and black dial with white digits / markers
- stainless steel case, polished, rose gold coated, moon phase,
- diameter: 36 mm, Height: 10 mm
- water-resistant up to 3 atm



**Ref.: 7044-3**

- movement Ronda 515, quartz-controlled, Swiss technology
- Hesalite crystal
- blue dial with white digits / markers
- stainless steel case, polished, IP gold coated
- diameter: 40 mm, Height: 10 mm, weight: 45 g
- water-resistant up to 3 atm



**Ref.: 7046-1**

- movement Ronda 515, quartz-controlled, Swiss technology
- Hesalite crystal
- white dial with black digits / markers
- stainless steel case, polished
- diameter: 40 mm, Height: 10 mm
- water-resistant up to 3 atm



*perspective view*

**Ref.: 7046-2**

- movement Ronda 515, quartz-controlled, Swiss technology
- Hesalite crystal
- anthracite dial with white digits / markers
- stainless steel case, polished
- diameter: 40 mm, Height: 10 mm
- water-resistant up to 3 atm





**Ref.: 7046-3**

- movement Ronda 515, quartz-controlled, Swiss technology
- Hesalite crystal
- blue dial with white digits / markers
- stainless steel case, polished
- diameter: 40 mm, Height: 10 mm, weight: 45 g
- water-resistant up to 3 atm



**Ref.: 7046-4**

- movement Ronda 515, quartz-controlled, Swiss technology
- Hesalite crystal
- beige dial with black digits / markers
- stainless steel case, polished
- diameter: 40 mm, Height: 10 mm
- water-resistant up to 3 atm



**Ref.: 7046-5**

- movement Ronda 515, quartz-controlled, Swiss technology
- Hesalite crystal
- brown dial with white digits / markers
- stainless steel case, polished
- diameter: 40 mm, Height: 10 mm
- water-resistant up to 3 atm



**Ref.: 7046M-2**

- movement Ronda 515, quartz-controlled, Swiss technology
- Hesalite crystal
- anthracite dial with white digits / markers
- stainless steel case, polished
- diameter: 40 mm, Height: 10 mm
- water-resistant up to 3 atm





*perspective view*



*fragment view*



*bottom view*

**Ref.: 7060-1**

- movement Cal. 9132, mechanic, self-winding, 26 jewels
- power reserve indicator
- Hesalite crystal
- white dial with black digits / markers
- stainless steel case, polished
- diameter: 40 mm, Height: 12 mm, weight: 70 g
- water-resistant up to 3 atm



*perspective view*



*bottom view*

**Ref.: 7060-4**

- movement Cal. 9132, mechanic, self-winding, 26 jewels
- power reserve indicator
- Hesalite crystal
- beige dial with black digits / markers
- stainless steel case, polished
- diameter: 40 mm, Height: 12 mm, weight: 70 g
- water-resistant up to 3 atm



*bottom view*

**Ref.: 7060-5**

- movement Cal. 9132, mechanic, self-winding, 26 jewels
- power reserve indicator
- Hesalite crystal
- brown dial with white digits / markers
- stainless steel case, polished
- diameter: 40 mm, Height: 12 mm, weight: 70 g
- water-resistant up to 3 atm





**Ref.: 7060M-1**

- movement Cal. 9132, mechanic, self-winding, 26 jewels
- power reserve indicator
- Hesalite crystal
- white dial with black digits / markers
- stainless steel case, polished
- diameter: 40 mm, Height: 12 mm
- water-resistant up to 3 atm





**Ref.: 7062-1**

- movement Cal. 9132, mechanic, self-winding, 26 jewels
- power reserve indicator
- Hesalite crystal
- silver colored dial with black digits / markers
- stainless steel case, polished
- diameter: 40 mm, Height: 12 mm, weight: 70 g
- water-resistant up to 3 atm



**Ref.: 7064-2**

- movement Cal. 9132, mechanic, self-winding, 26 jewels
- power reserve indicator
- Hesalite crystal
- black dial with white digits / markers
- stainless steel case, polished, rose gold coated
- diameter: 40 mm, Height: 12 mm, weight: 70 g
- water-resistant up to 3 atm



**Ref.: 7068-1**

- movement Cal. 9015, mechanic, self-winding, 24 jewels
- Hesalite crystal, crystal exhibition back
- silver colored dial with black digits / markers
- stainless steel case, rose gold coated
- diameter: 40 mm, Height: 12 mm, weight: 45 g
- water-resistant up to 3 atm



**Ref.: 7068-2**

- movement Cal. 9015, mechanic, self-winding, 24 jewels
- Hesalite crystal, crystal exhibition back
- black dial with white digits / markers
- stainless steel case, rose gold coated
- diameter: 40 mm, Height: 12 mm, weight: 45 g
- water-resistant up to 3 atm





**Ref.: 7084-2**

- movement Ronda 5030.D, quartz-controlled, Swiss technology
- chronograph
- Hesalite crystal, crystal exhibition back
- black dial with white digits / markers
- stainless steel case, polished, rose gold coated
- diameter: 40 mm, Height: 12 mm
- water-resistant up to 3 atm



*fragment view*

**Ref.: 7086-1**

- movement Ronda 5030.D, quartz-controlled, Swiss technology
- chronograph
- Hesalite crystal, crystal exhibition back
- white dial with black digits / markers
- stainless steel case, polished
- diameter: 40 mm, Height: 12 mm
- water-resistant up to 3 atm



*perspective view*

**Ref.: 7086-2**

- movement Ronda 5030.D, quartz-controlled, Swiss technology
- chronograph
- Hesalite crystal
- anthracite dial with white digits / markers
- stainless steel case , ,
- diameter: 40 mm, Height: 10 mm
- water-resistant up to 3 atm





**Ref.: 7086-4**

- movement Ronda 5030.D, quartz-controlled, Swiss technology
- chronograph
- Hesalite crystal, crystal exhibition back
- beige dial with black digits / markers
- stainless steel case, polished
- diameter: 40 mm, Height: 12 mm
- water-resistant up to 3 atm





**Ref.: 7086-5**

- movement Ronda 5030.D, quartz-controlled, Swiss technology
- chronograph
- Hesalite crystal, crystal exhibition back
- brown dial with white digits / markers
- stainless steel case, polished
- diameter: 40 mm, Height: 12 mm
- water-resistant up to 3 atm



**Ref.: 7086M-1**

- movement Ronda 5030.D, quartz-controlled, Swiss technology
- chronograph
- Hesalite crystal, crystal exhibition back
- white dial with black digits / markers
- stainless steel case, polished
- diameter: 40 mm, Height: 12 mm
- water-resistant up to 3 atm



**Ref.: 7086M-2**

- movement Ronda 5030.D, quartz-controlled, Swiss technology
- chronograph
- Hesalite crystal
- anthracite dial with white digits / markers
- stainless steel case , ,
- diameter: 40 mm, Height: 10 mm
- water-resistant up to 3 atm





**Ref.: 7086M-5**

- movement Ronda 5030.D, quartz-controlled, Swiss technology
- chronograph
- Hesalite crystal, crystal exhibition back
- brown dial with white digits / markers
- stainless steel case, polished
- diameter: 40 mm, Height: 12 mm
- water-resistant up to 3 atm





**Ref.: 7088-1**

- movement Ronda 5030.D, quartz-controlled, Swiss technology
- chronograph
- Hesalite crystal, crystal exhibition back
- silver colored dial with black digits / markers
- stainless steel case, polished
- diameter: 40 mm, Height: 12 mm
- water-resistant up to 3 atm



**Ref.: 7240-2**

- movement Ronda 515, quartz-controlled, Swiss technology
- black dial with white, in the dark blue shining digits / markers
- stainless steel case, satined
- diameter: 42 mm
- water-resistant up to 10 atm



**Ref.: 7240M-2**

- movement Ronda 515, quartz-controlled, Swiss technology
- black dial with white, in the dark blue shining digits / markers
- stainless steel case, satined
- diameter: 42 mm, weight: 165 g
- water-resistant up to 10 atm



*perspective view*

**Ref.: 7260-2**

- movement Cal. Made by Citizen, modified by POINT tec W9100, mechanic, self-winding, 26 jewels
- weekday indicator power reserve indicator
- crystal exhibition back
- black dial with white, in the dark blue/green shining digits / markers
- stainless steel case, satined, black PVD coated
- diameter: 42 mm
- water-resistant up to 10 atm





**Ref.: 7262-2**

- movement Cal. Made by Citizen, modified by POINT tec W9100, mechanic, self-winding, 26 jewels
- weekday indicator power reserve indicator
- crystal exhibition back
- black dial with white, in the dark blue shining digits / markers
- stainless steel case
- diameter: 42 mm
- water-resistant up to 10 atm



**Ref.: 7262M-2**

- movement Cal. Made by Citizen, modified by POINT tec W9100, mechanic, self-winding, 26 jewels
- weekday indicator power reserve indicator
- crystal exhibition back
- black dial with white, in the dark blue shining digits / markers
- stainless steel case
- diameter: 42 mm
- water-resistant up to 10 atm



No image available.  
*perspective view*

**Ref.: 7264M-2**

- movement Cal. 9015, mechanic, self-winding, 24 jewels
- crystal exhibition back
- black dial with white, in the dark blue shining digits / markers
- stainless steel case, satined
- stainless steel bezel , black PVD coated , satined , with turnable bezel,
- diameter: 42 mm, weight: 175 g
- water-resistant up to 20 atm





**Ref.: 7290-2**

- movement ETA G10.211, quartz-controlled, 4 jewels, Swiss made
- 10th seconds totalizer chronograph
- black dial with white, in the dark blue shining digits / markers
- stainless steel case, satined, black PVD coated
- diameter: 42 mm
- water-resistant up to 10 atm



**Ref.: 7292-2**

- movement ETA G10.211, quartz-controlled, 4 jewels, Swiss made
- 10th seconds totalizer chronograph
- black dial with white, in the dark blue shining digits / markers
- stainless steel case
- diameter: 42 mm
- water-resistant up to 10 atm



**Ref.: 7292M-2**

- movement ETA G10.211, quartz-controlled, 4 jewels, Swiss made
- 10th seconds totalizer chronograph
- black dial with white, in the dark blue shining digits / markers
- stainless steel case
- diameter: 42 mm, weight: 170 g
- water-resistant up to 10 atm





**Ref.: 7331-5**

- movement Ronda 1069, quartz-controlled, Swiss technology
- small seconds
- silver colored dial
- genuine Mother of Pearl dial inlay
- stainless steel case, satined, rose gold coated, crown with Swarovski stone,
- diameter: 35 mm, Height: 6 mm
- water-resistant up to 5 atm



**Ref.: 7331M-5**

- movement Ronda 1069, quartz-controlled, Swiss technology
- small seconds
- silver colored dial
- genuine Mother of Pearl dial inlay
- stainless steel case, satined, rose gold coated, crown with Swarovski stone,
- diameter: 35 mm, Height: 6 mm
- water-resistant up to 5 atm



**Ref.: 7333-1**

- movement Ronda 1069, quartz-controlled, Swiss technology
- small seconds
- silver colored dial
- genuine Mother of Pearl dial inlay
- structured dial
- stainless steel case, satined, crown with Swarovski stone,
- diameter: 35 mm, Height: 6 mm
- water-resistant up to 5 atm



**Ref.: 7333-2**

- movement Ronda 1069, quartz-controlled, Swiss technology
- small seconds
- black dial
- genuine Mother of Pearl dial inlay
- structured dial
- stainless steel case, satined, crown with Swarovski stone,
- diameter: 35 mm, Height: 6 mm
- water-resistant up to 5 atm





**Ref.: 7333-5**

- movement Ronda 1069, quartz-controlled, Swiss technology
- small seconds
- silver colored dial
- genuine Mother of Pearl dial inlay
- structured dial
- stainless steel case, satined, gold coated
- diameter: 35 mm, Height: 6 mm
- water-resistant up to 5 atm



**Ref.: 7333M-1**

- movement Ronda 1069, quartz-controlled, Swiss technology
- small seconds
- silver colored dial
- genuine Mother of Pearl dial inlay
- structured dial
- stainless steel case, satined, crown with Swarovski stone,
- diameter: 35 mm, Height: 6 mm
- water-resistant up to 5 atm



**Ref.: 7333M-5**

- movement Ronda 1069, quartz-controlled, Swiss technology
- small seconds
- silver colored dial
- genuine Mother of Pearl dial inlay
- structured dial
- stainless steel case, satined, gold coated
- diameter: 35 mm, Height: 6 mm
- water-resistant up to 5 atm



**Ref.: 7335-1**

- movement Ronda 1069, quartz-controlled, Swiss technology
- small seconds
- silver colored dial
- genuine Mother of Pearl dial inlay
- structured dial
- stainless steel case, satined, crown with Swarovski stone,
- diameter: 35 mm, Height: 6 mm
- water-resistant up to 5 atm





**Ref.: 7335M-1**

- movement Ronda 1069, quartz-controlled, Swiss technology
- small seconds
- silver colored dial
- genuine Mother of Pearl dial inlay
- stainless steel case, satined, crown with Swarovski stone,
- diameter: 35 mm, Height: 6 mm
- water-resistant up to 5 atm



*perspective view*

**Ref.: 7336-5**

- movement Ronda 6004.D, quartz-controlled, 5 jewels, Swiss made
- brown dial with white digits / markers
- 12 green luminous dots
- stainless steel case, rose gold coated, special case design for an extra slim look,
- diameter: 39 mm, Height: 7 mm
- water-resistant up to 3 atm



*perspective view*



*bottom view*

**Ref.: 7350-1**

- movement ETA 2824-2 / SW 200, mechanic, self-winding, 25 jewels, Swiss made
- crystal exhibition back
- white dial with anthracite digits / markers
- 12 green luminous dots
- stainless steel case, satined, special case design for an extra slim look,
- diameter: 40 mm, Height: 10 mm
- water-resistant up to 5 atm



**Ref.: 7350-2**

- movement ETA 2824-2 / SW 200, mechanic, self-winding, 25 jewels, Swiss made
- crystal exhibition back
- anthracite dial
- 12 green luminous dots
- stainless steel case, satined, special case design for an extra slim look,
- diameter: 40 mm, Height: 10 mm
- water-resistant up to 5 atm





*bottom view*

**Ref.: 7350-4**

- movement ETA 2824-2 / SW 200, mechanic, self-winding, 25 jewels, Swiss made
- crystal exhibition back
- silver colored dial with black digits / markers
- 12 green luminous dots
- stainless steel case, satined, special case design for an extra slim look,
- diameter: 40 mm, Height: 10 mm
- water-resistant up to 5 atm



**Ref.: 7362-1**

- movement Cal. 82S5, mechanic, self-winding
- Open Heart - a clip in the dial uncovers the balance
- crystal exhibition back
- beige dial with black digits / markers
- stainless steel case, polished, gold coated
- diameter: 40 mm, Height: 12 mm
- water-resistant up to 5 atm



**Ref.: 7362-2**

- movement Cal. 82S5, mechanic, self-winding
- Open Heart - a clip in the dial uncovers the balance
- crystal exhibition back
- black dial with white digits / markers
- stainless steel case, polished, rose gold coated
- diameter: 40 mm, Height: 12 mm
- water-resistant up to 5 atm



**Ref.: 7362-4**

- movement Cal. 82S5, mechanic, self-winding
- Open Heart - a clip in the dial uncovers the balance
- crystal exhibition back
- silver colored dial with black digits / markers
- stainless steel case, polished, rose gold coated
- diameter: 40 mm, Height: 12 mm
- water-resistant up to 5 atm





**Ref.: 7362-5**

- movement Cal. 82S5, mechanic, self-winding
- Open Heart - a clip in the dial uncovers the balance
- crystal exhibition back
- brown dial with silver colored digits / markers
- stainless steel case, polished, rose gold coated
- diameter: 40 mm, Height: 12 mm
- water-resistant up to 5 atm



**Ref.: 7364-2**

- movement Cal. 82S5, mechanic, self-winding
- Open Heart - a clip in the dial uncovers the balance
- crystal exhibition back
- black dial with white digits / markers
- stainless steel case
- diameter: 40 mm, Height: 12 mm
- water-resistant up to 5 atm



**Ref.: 7364-3**

- movement Cal. 82S5, mechanic, self-winding
- Open Heart - a clip in the dial uncovers the balance
- crystal exhibition back
- blue dial with white digits / markers
- stainless steel case
- diameter: 40 mm, Height: 12 mm
- water-resistant up to 5 atm



**Ref.: 7364-4**

- movement Cal. 82S5, mechanic, self-winding
- Open Heart - a clip in the dial uncovers the balance
- crystal exhibition back
- silver colored dial with black digits / markers
- stainless steel case
- diameter: 40 mm, Height: 12 mm
- water-resistant up to 5 atm





**Ref.: 7364-5**

- movement Cal. 82S5, mechanic, self-winding
- Open Heart - a clip in the dial uncovers the balance
- crystal exhibition back
- beige dial with black digits / markers
- stainless steel case
- diameter: 40 mm, Height: 12 mm
- water-resistant up to 5 atm



**Ref.: 7366-2**

- movement Cal. 9132, mechanic, self-winding, 26 jewels
- power reserve indicator
- crystal exhibition back
- anthracite dial with white digits / markers
- stainless steel case, polished
- diameter: 40 mm, Height: 12 mm, weight: 70 g
- water-resistant up to 5 atm



**Ref.: 7366-3**

- movement Cal. 9132, mechanic, self-winding, 26 jewels
- power reserve indicator
- crystal exhibition back
- blue dial with white digits / markers
- stainless steel case, polished
- diameter: 40 mm, Height: 12 mm, weight: 70 g
- water-resistant up to 5 atm



**Ref.: 7366-4**

- movement Cal. 9132, mechanic, self-winding, 26 jewels
- power reserve indicator
- crystal exhibition back
- silver colored dial with black digits / markers
- stainless steel case, polished
- diameter: 40 mm, Height: 12 mm, weight: 70 g
- water-resistant up to 5 atm





**Ref.: 7366-5**

- movement Cal. 9132, mechanic, self-winding, 26 jewels
- power reserve indicator
- crystal exhibition back
- beige dial with black digits / markers
- stainless steel case, polished
- diameter: 40 mm, Height: 12 mm, weight: 70 g
- water-resistant up to 5 atm



**Ref.: 7368-2**

- movement Cal. 9132, mechanic, self-winding, 26 jewels
- power reserve indicator
- crystal exhibition back
- anthracite dial with white digits / markers
- stainless steel case, polished, rose gold coated
- diameter: 40 mm, Height: 12 mm, weight: 70 g
- water-resistant up to 5 atm



**Ref.: 7368-4**

- movement Cal. 9132, mechanic, self-winding, 26 jewels
- power reserve indicator
- crystal exhibition back
- silver colored dial with black digits / markers
- stainless steel case, polished, rose gold coated
- diameter: 40 mm, Height: 12 mm, weight: 70 g
- water-resistant up to 5 atm



**Ref.: 7368-5**

- movement Cal. 9132, mechanic, self-winding, 26 jewels
- power reserve indicator
- crystal exhibition back
- beige dial with black digits / markers
- stainless steel case, polished, gold coated
- diameter: 40 mm, Height: 12 mm, weight: 70 g
- water-resistant up to 5 atm





**Ref.: 7386-1**

- movement Ronda 5020.B, quartz-controlled, Swiss technology
- 12 hours totalizer big date
- white dial
- 12 green luminous dots
- stainless steel case , special case design for an extra slim look,
- diameter: 40 mm, Height: 12 mm
- water-resistant up to 5 atm



*bottom view*

**Ref.: 7437-1**

- movement Ronda 1069, quartz-controlled, Swiss technology
- small seconds
- white dial with silver colored digits / markers
- stainless steel case
- diameter: 34 mm, Height: 9 mm
- water-resistant up to 5 atm



*bottom view*

**Ref.: 7439-1**

- movement Ronda 1069, quartz-controlled, Swiss technology
- small seconds
- white dial with silver colored digits / markers with crystals , produced by Swarovski
- stainless steel case
- diameter: 34 mm, Height: 9 mm
- water-resistant up to 5 atm



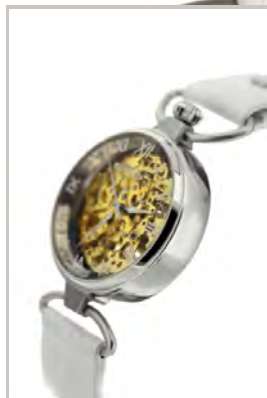
**Ref.: 7457-2**

- movement Cal. 8N24, mechanic, self-winding
- skeleton movement
- crystal exhibition back
- stainless steel case , revolutionary case, which can be worn at the wrist as well as on a neckband,
- diameter: 34 mm, Height: 12 mm
- water-resistant up to 5 atm





*perspective view*



*bottom view*

**Ref.: 7457-5**

- movement Cal. 8N24g, mechanic, self-winding
- golden skeleton movement
- crystal exhibition back
- stainless steel case , revolutionary case, which can be worn at the wrist as well as on a neckband,
- diameter: 34 mm, Height: 12 mm
- water-resistant up to 5 atm



**Ref.: 7459-1**

- movement Cal. 8N24, mechanic, self-winding
- skeleton movement
- crystal exhibition back
- stainless steel case, rose gold coated, revolutionary case, which can be worn at the wrist as well as on a neckband,
- diameter: 34 mm, Height: 12 mm
- water-resistant up to 5 atm



**Ref.: 7459-5**

- movement Cal. 8N24, mechanic, self-winding
- skeleton movement
- crystal exhibition back
- stainless steel case
- diameter: 34 mm, Height: 12 mm
- water-resistant up to 5 atm



**Ref.: 7540-1**

- movement Ronda 6203.B, quartz-controlled, Swiss technology
- big date dual time - freely adjustable second time
- white dial with black digits / markers
- stainless steel case, polished
- diameter: 41 mm
- water-resistant up to 5 atm





**Ref.: 7540-3**

- movement Ronda 6203.B, quartz-controlled, Swiss technology
- big date dual time - freely adjustable second time
- blue and black dial with white digits / markers
- stainless steel case, polished
- diameter: 41 mm
- water-resistant up to 5 atm



**Ref.: 7540M-3**

- movement Ronda 6203.B, quartz-controlled, Swiss technology
- big date dual time - freely adjustable second time
- blue and black dial with white digits / markers
- stainless steel case, polished
- diameter: 41 mm
- water-resistant up to 5 atm



*perspective view*



*fragment view*

**Ref.: 7543-1**

- movement Ronda 6004.D, quartz-controlled, 5 jewels, Swiss made
- white dial with black digits / markers
- stainless steel case
- diameter: 36 mm
- water-resistant up to 5 atm





**Ref.: 7543-3**

- movement Ronda 6004.D, quartz-controlled, 5 jewels, Swiss made
- blue dial with white digits / markers
- stainless steel case
- diameter: 36 mm
- water-resistant up to 5 atm





*perspective view*

**Ref.: 7546-1**

- movement Ronda 505.24H, quartz-controlled, Swiss technology
- GMT - freely adjustable second time zone
- white dial with black digits / markers
- stainless steel case, polished
- diameter: 41 mm
- water-resistant up to 5 atm



**Ref.: 7546-3**

- movement Ronda 505.24H, quartz-controlled, Swiss technology
- GMT - freely adjustable second time zone
- blue dial with white digits / markers
- stainless steel case, polished
- diameter: 41 mm
- water-resistant up to 5 atm



*perspective view*



*bottom view*

**Ref.: 7560-1**

- movement Cal. Made by Citizen, modified by POINT tec, mechanic, self-winding, 26 jewels
- 24 Hour display,
- crystal exhibition back
- white dial with black digits / markers
- stainless steel case, polished
- diameter: 41 mm
- water-resistant up to 5 atm





**Ref.: 7560-3**

- movement Cal. Made by Citizen, modified by POINT tec, mechanic, self-winding, 26 jewels
- 24 Hour display,
- crystal exhibition back
- blue and black dial with white digits / markers with 8 crystals
- stainless steel case, polished
- diameter: 41 mm
- water-resistant up to 5 atm





*perspective view*

**Ref.: 7577-1**

- movement Ronda 5030.D, quartz-controlled, Swiss technology
- chronograph
- white dial with black digits / markers
- stainless steel case
- diameter: 36 mm
- water-resistant up to 5 atm



**Ref.: 7577-3**

- movement Ronda 5030.D, quartz-controlled, Swiss technology
- chronograph
- blue and black dial with white digits / markers
- stainless steel case
- diameter: 36 mm
- water-resistant up to 5 atm



*perspective view*

**Ref.: 7578-1**

- movement Ronda 3520.D, quartz-controlled, Swiss technology
- 12 hours totalizer chronograph
- white dial with black digits / markers
- stainless steel case, polished
- diameter: 41 mm
- water-resistant up to 5 atm





**Ref.: 7578-3**

- movement Ronda 3520.D, quartz-controlled, Swiss technology
- 12 hours totalizer chronograph
- blue and black dial with white digits / markers
- stainless steel case, polished
- diameter: 41 mm
- water-resistant up to 5 atm





**Ref.: 7578M-3**

- movement Ronda 3520.D, quartz-controlled, Swiss technology
- 12 hours totalizer chronograph
- blue and black dial with white digits / markers
- stainless steel case, polished
- diameter: 41 mm
- water-resistant up to 5 atm



*bottom view*

**Ref.: 7610-4**

- movement ETA Valjoux 7753, mechanic, self-winding, 27 jewels, Swiss made
- chronograph
- sapphire crystal, crystal exhibition back
- silver colored dial with black digits / markers
- stainless steel case, satined, special hand-finished case with the typical Zeppelin shape on the edge of the case,
- diameter: 42 mm, Height: 16 mm, weight: 110 g
- water-resistant up to 5 atm





*perspective view*



*bottom view*

**Ref.: 7612-4**

- movement ETA Valjoux 7753, mechanic, self-winding, 27 jewels, Swiss made
- chronograph
- sapphire crystal, crystal exhibition back
- silver colored dial with black digits / markers
- Chronometer Certificate Sternwarte Glashütte - guarantees highest precision and accuracy of measurement even through extreme temperature variations
- stainless steel case, satined, special hand-finished case with the typical Zeppelin shape on the edge of the case,
- diameter: 42 mm, Height: 16 mm, weight: 110 g
- water-resistant up to 5 atm



*perspective view*



*bottom view*

**Ref.: 7618-1**

- movement ETA Valjoux 7753, mechanic, self-winding, 27 jewels, Swiss made
- chronograph
- sapphire crystal, crystal exhibition back
- silver colored dial with black digits / markers
- stainless steel case, satined, special hand-finished case with the typical Zeppelin shape on the edge of the case,
- diameter: 42 mm, Height: 16 mm, weight: 98 g
- water-resistant up to 5 atm





**Ref.: 7618M-1**

- movement ETA Valjoux 7753, mechanic, self-winding, 27 jewels, Swiss made
- chronograph
- sapphire crystal, crystal exhibition back
- silver colored dial with black digits / markers
- stainless steel case, satined, special hand-finished case with the typical Zeppelin shape on the edge of the case,
- diameter: 42 mm, Height: 16 mm, weight: 105 g
- water-resistant up to 5 atm



*bottom view*

**Ref.: 7620-1**

- movement ETA Valjoux 7753, mechanic, self-winding, 27 jewels, Swiss made
- chronograph
- sapphire crystal, crystal exhibition back
- silver colored dial with black digits / markers
- Chronometer Certificate Sternwarte Glashütte - guarantees highest precision and accuracy of measurement even through extreme temperature variations
- stainless steel case, satined, special hand-finished case with the typical Zeppelin shape on the edge of the case,
- diameter: 42 mm, Height: 16 mm, weight: 98 g
- water-resistant up to 5 atm



**Ref.: 7624-1**

- movement SII NE88, mechanic, self-winding, 34 jewels
- chronograph
- sapphire coated K1 crystal
- white dial
- 2 minutes tachymeter indicator
- stainless steel case, polished
- diameter: 42 mm, Height: 100 mm, weight: 42 g
- water-resistant up to 5 atm





**Ref.: 7624-2**

- movement SII NE88, mechanic, self-winding, 34 jewels
- chronograph
- sapphire coated K1 crystal
- black dial
- 2 minutes tachymeter indicator
- stainless steel case, polished
- diameter: 42 mm, Height: 100 mm, weight: 42 g
- water-resistant up to 5 atm





**Ref.: 7624-4**

- movement SII NE88, mechanic, self-winding, 34 jewels
- chronograph
- sapphire coated K1 crystal
- silver colored dial
- 2 minutes tachymeter indicator
- stainless steel case, polished
- diameter: 42 mm, Height: 100 mm, weight: 42 g
- water-resistant up to 5 atm



**Ref.: 7624-5**

- movement SII NE88, mechanic, self-winding, 34 jewels
- chronograph
- sapphire coated K1 crystal
- beige dial
- 2 minutes tachymeter indicator
- stainless steel case, polished
- diameter: 42 mm, Height: 100 mm, weight: 42 g
- water-resistant up to 5 atm



**Ref.: 7631-1**

- movement Ronda 6004.D, quartz-controlled, 5 jewels, Swiss made
- silver colored dial with silver colored digits / markers with 8 crystals , produced by Swarovski
- shell-structured dial
- stainless steel case, polished
- diameter: 35 mm, Height: 9 mm, weight: 38 g
- water-resistant up to 5 atm



**Ref.: 7631-4**

- movement Ronda 6004.D, quartz-controlled, 5 jewels, Swiss made
- silver colored dial with silver colored digits / markers with 8 crystals , produced by Swarovski
- shell-structured dial
- stainless steel case, polished
- diameter: 35 mm, Height: 9 mm, weight: 38 g
- water-resistant up to 5 atm





**Ref.: 7633-2**

- movement Ronda 6004.D, quartz-controlled, 5 jewels, Swiss made
- black dial with gold colored digits / markers with 8 chrystals , produced by Swarovski
- shell-structured dial
- stainless steel case, polished, rose gold coated
- diameter: 35 mm, Height: 9 mm, weight: 38 g
- water-resistant up to 5 atm



**Ref.: 7633-5**

- movement Ronda 6004.D, quartz-controlled, 5 jewels, Swiss made
- silver colored dial with silver colored digits / markers with 8 chrystals , produced by Swarovski
- shell-structured dial
- stainless steel case, polished, rose gold coated
- diameter: 35 mm, Height: 9 mm, weight: 38 g
- water-resistant up to 5 atm



**Ref.: 7637-1**

- movement Ronda 706B, quartz-controlled
- silver colored dial with gold colored digits / markers with 9 chrystals , produced by Swarovski
- shell-structured dial
- stainless steel case, polished, moon phase,
- diameter: 35 mm, Height: 12 mm, weight: 47 g
- water-resistant up to 5 atm



**Ref.: 7637-3**

- movement Ronda 706B, quartz-controlled
- blue dial with gold colored digits / markers with 9 chrystals , produced by Swarovski
- shell-structured dial
- stainless steel case, polished, moon phase,
- diameter: 35 mm, Height: 12 mm, weight: 47 g
- water-resistant up to 5 atm





**Ref.: 7637M-1**

- movement Ronda 706B, quartz-controlled
- silver colored dial with gold colored digits / markers with 9 chrystals , produced by Swarovski
- shell-structured dial
- stainless steel case, polished, moon phase,
- diameter: 35 mm, Height: 12 mm, weight: 47 g
- water-resistant up to 5 atm



**Ref.: 7637M-3**

- movement Ronda 706B, quartz-controlled
- blue dial with gold colored digits / markers with 9 crystals , produced by Swarovski
- shell-structured dial
- stainless steel case, polished, moon phase,
- diameter: 35 mm, Height: 12 mm, weight: 47 g
- water-resistant up to 5 atm



**Ref.: 7639-4**

- movement Ronda 706B, quartz-controlled
- silver colored dial with gold colored digits / markers with 9 crystals , produced by Swarovski
- shell-structured dial
- case polished, rose gold coated, moon phase,
- diameter: 35 mm, Height: 12 mm, weight: 47 g
- water-resistant up to 5 atm





**Ref.: 7639M-3**

- movement Ronda 706B, quartz-controlled
- blue dial with gold colored digits / markers with 9 chrystals , produced by Swarovski
- shell-structured dial
- case polished, rose gold coated, moon phase,
- diameter: 35 mm, Height: 12 mm, weight: 47 g
- water-resistant up to 5 atm





**Ref.: 7639M-4**

- movement Ronda 706B, quartz-controlled
- silver colored dial with gold colored digits / markers with 9 chrystals , produced by Swarovski
- shell-structured dial
- casepolished, rose gold coated, moon phase,
- diameter: 35 mm, Height: 12 mm, weight: 47 g
- water-resistant up to 5 atm



*pair view*

**Ref.: 7640-1**

- movement Ronda 6203.B, quartz-controlled, Swiss technology
- big date dual time - freely adjustable second time
- silver colored dial with black digits / markers
- stainless steel case , special hand-finished case with the typical Zeppelin shape on the edge of the case,
- diameter: 42 mm, Height: 11 mm
- water-resistant up to 5 atm



*pair view*

**Ref.: 7640-2**

- movement Ronda 6203.B, quartz-controlled, Swiss technology
- big date dual time - freely adjustable second time
- black dial with white digits / markers
- stainless steel case , special hand-finished case with the typical Zeppelin shape on the edge of the case,
- diameter: 42 mm, Height: 11 mm
- water-resistant up to 5 atm





**Ref.: 7640-3**

- movement Ronda 6203.B, quartz-controlled, Swiss technology
- big date dual time - freely adjustable second time
- white, in the dark blue shining dial with black digits / markers
- stainless steel case, black PVD coated, special hand-finished case with the typical Zeppelin shape on the edge of the case,
- diameter: 42 mm, Height: 11 mm
- water-resistant up to 5 atm





**Ref.: 7640-4**

- movement Ronda 6203.B, quartz-controlled, Swiss technology
- big date dual time - freely adjustable second time
- white dial with black digits / markers
- stainless steel case , special hand-finished case with the typical Zeppelin shape on the edge of the case,
- diameter: 42 mm, Height: 11 mm
- water-resistant up to 5 atm



**Ref.: 7640M-1**

- movement Ronda 6203.B, quartz-controlled, Swiss technology
- big date dual time - freely adjustable second time
- silver colored dial with black digits / markers
- stainless steel case , special hand-finished case with the typical Zeppelin shape on the edge of the case,
- diameter: 42 mm, Height: 11 mm
- water-resistant up to 5 atm





**Ref.: 7640M-2**

- movement Ronda 6203.B, quartz-controlled, Swiss technology
- big date dual time - freely adjustable second time
- black dial with white digits / markers
- stainless steel case , special hand-finished case with the typical Zeppelin shape on the edge of the case,
- diameter: 42 mm, Height: 11 mm
- water-resistant up to 5 atm



**Ref.: 7640M-4**

- movement Ronda 6203.B, quartz-controlled, Swiss technology
- big date dual time - freely adjustable second time
- white dial with black digits / markers
- stainless steel case , special hand-finished case with the typical Zeppelin shape on the edge of the case,
- diameter: 42 mm, Height: 11 mm
- water-resistant up to 5 atm





**Ref.: 7642-1**

- movement Ronda 505.24H, quartz-controlled, Swiss technology
- GMT - freely adjustable second time zone
- white dial with black digits / markers
- stainless steel case, satined, special hand-finished case with the typical Zeppelin shape on the edge of the case,
- diameter: 42 mm, Height: 11 mm, weight: 90 g
- water-resistant up to 5 atm



**Ref.: 7642-2**

- movement Ronda 505.24H, quartz-controlled, Swiss technology
- GMT - freely adjustable second time zone
- black dial with white digits / markers
- stainless steel case, satined, special hand-finished case with the typical Zeppelin shape on the edge of the case,
- diameter: 42 mm, Height: 11 mm, weight: 90 g
- water-resistant up to 5 atm



**Ref.: 7642-5**

- movement Ronda 505.24H, quartz-controlled, Swiss technology
- GMT - freely adjustable second time zone
- beige dial with black digits / markers
- stainless steel case, satined, special hand-finished case with the typical Zeppelin shape on the edge of the case,
- diameter: 42 mm, Height: 11 mm, weight: 90 g
- water-resistant up to 5 atm





**Ref.: 7642M-5**

- movement Ronda 505.24H, quartz-controlled, Swiss technology
- GMT - freely adjustable second time zone
- beige dial with black digits / markers
- stainless steel case, satined, special hand-finished case with the typical Zeppelin shape on the edge of the case,
- diameter: 42 mm, Height: 11 mm, weight: 90 g
- water-resistant up to 5 atm



**Ref.: 7644-1**

- movement Ronda 6203.B, quartz-controlled, Swiss technology
- big date dual time - freely adjustable second time
- white dial with black digits / markers
- stainless steel case , special hand-finished case with the typical Zeppelin shape on the edge of the case,
- diameter: 42 mm, Height: 11 mm, weight: 90 g
- water-resistant up to 5 atm



*pair view*

**Ref.: 7644-2**

- movement Ronda 6203.B, quartz-controlled, Swiss technology
- big date dual time - freely adjustable second time
- black dial with white digits / markers
- stainless steel case , special hand-finished case with the typical Zeppelin shape on the edge of the case,
- diameter: 42 mm, Height: 11 mm, weight: 90 g
- water-resistant up to 5 atm





*pair view*

**Ref.: 7644-5**

- movement Ronda 6203.B, quartz-controlled, Swiss technology
- big date dual time - freely adjustable second time
- beige dial with black digits / markers
- stainless steel case , special hand-finished case with the typical Zeppelin shape on the edge of the case,
- diameter: 42 mm, Height: 11 mm, weight: 90 g
- water-resistant up to 5 atm



**Ref.: 7644M-1**

- movement Ronda 6203.B, quartz-controlled, Swiss technology
- big date dual time - freely adjustable second time
- white dial with black digits / markers
- stainless steel case , special hand-finished case with the typical Zeppelin shape on the edge of the case,
- diameter: 42 mm, Height: 11 mm
- water-resistant up to 5 atm



**Ref.: 7650-1**

- movement ETA 2826-2, mechanic, self-winding, 25 jewels, Swiss made
- big date
- crystal exhibition back
- white dial with black digits / markers
- Chronometer Certificate Sternwarte Glashütte - guarantees highest precision and accuracy of measurement even through extreme temperature variations
- stainless steel case, polished, special hand-finished case with the typical Zeppelin shape on the edge of the case,
- diameter: 42 mm, Height: 13 mm
- water-resistant up to 5 atm





**Ref.: 7650-2**

- movement ETA 2826-2, mechanic, self-winding, 25 jewels, Swiss made
- big date
- sapphire crystal, crystal exhibition back
- black dial with white digits / markers
- Chronometer Certificate Sternwarte Glashütte - guarantees highest precision and accuracy of measurement even through extreme temperature variations
- stainless steel case, satined, special hand-finished case with the typical Zeppelin shape on the edge of the case,
- diameter: 42 mm, Height: 13 mm
- water-resistant up to 5 atm



**Ref.: 7652-1**

- movement ETA 2826-2, mechanic, self-winding, 25 jewels, Swiss made
- big date
- crystal exhibition back
- white dial with black digits / markers
- stainless steel case, polished, special hand-finished case with the typical Zeppelin shape on the edge of the case,
- diameter: 42 mm, Height: 13 mm
- water-resistant up to 5 atm



**Ref.: 7652-2**

- movement ETA 2826-2, mechanic, self-winding, 25 jewels, Swiss made
- big date
- sapphire crystal, crystal exhibition back
- black dial with white digits / markers
- stainless steel case, satined, special hand-finished case with the typical Zeppelin shape on the edge of the case,
- diameter: 42 mm, Height: 13 mm
- water-resistant up to 5 atm





**Ref.: 7652-4**

- movement ETA 2826-2, mechanic, self-winding, 25 jewels, Swiss made
- big date
- sapphire crystal, crystal exhibition back
- white dial with gold colored digits / markers
- stainless steel case, satined, special hand-finished case with the typical Zeppelin shape on the edge of the case,
- diameter: 42 mm, Height: 13 mm
- water-resistant up to 5 atm



**Ref.: 7652-5**

- movement ETA 2826-2, mechanic, self-winding, 25 jewels, Swiss made
- big date
- sapphire crystal, crystal exhibition back
- white dial with gold colored digits / markers
- stainless steel case, satined, rose gold coated, special hand-finished case with the typical Zeppelin shape on the edge of the case,
- diameter: 42 mm, Height: 13 mm
- water-resistant up to 5 atm



**Ref.: 7652M-1**

- movement ETA 2826-2, mechanic, self-winding, 25 jewels, Swiss made
- big date
- sapphire crystal, crystal exhibition back
- white dial with black digits / markers
- stainless steel case, satined, special hand-finished case with the typical Zeppelin shape on the edge of the case,
- diameter: 42 mm, Height: 13 mm
- water-resistant up to 5 atm





**Ref.: 7652M-2**

- movement ETA 2826-2, mechanic, self-winding, 25 jewels, Swiss made
- big date
- crystal exhibition back
- black dial with white digits / markers
- stainless steel case, polished, special hand-finished case with the typical Zeppelin shape on the edge of the case,
- diameter: 42 mm, Height: 13 mm
- water-resistant up to 5 atm



**Ref.: 7654-2**

- movement ETA 2826-2, mechanic, self-winding, 25 jewels, Swiss made
- big date
- sapphire crystal, crystal exhibition back
- black dial with white digits / markers
- stainless steel case, satined, rose gold coated, special hand-finished case with the typical Zeppelin shape on the edge of the case,
- diameter: 42 mm, Height: 13 mm
- water-resistant up to 5 atm



**Ref.: 7654-4**

- movement ETA 2826-2, mechanic, self-winding, 25 jewels, Swiss made
- big date
- sapphire crystal, crystal exhibition back
- white dial with blue digits / markers
- stainless steel case, satined, special hand-finished case with the typical Zeppelin shape on the edge of the case,
- diameter: 42 mm, Height: 13 mm
- water-resistant up to 5 atm





**Ref.: 7654-5**

- movement ETA 2826-2, mechanic, self-winding, 25 jewels, Swiss made
- big date
- crystal exhibition back
- black dial with orange digits / markers
- stainless steel case, polished, special hand-finished case with the typical Zeppelin shape on the edge of the case,
- diameter: 42 mm, Height: 13 mm
- water-resistant up to 5 atm



*perspective view*

**Ref.: 7656-1**

- movement Cal. 821A, mechanic, self-winding, 21 jewels
- crystal exhibition back
- white dial with gold colored digits / markers
- stainless steel case, polished, special hand-finished case with the typical Zeppelin shape on the edge of the case,
- diameter: 40 mm, Height: 12 mm, weight: 70 g
- water-resistant up to 5 atm



*perspective view*

**Ref.: 7656-2**

- movement Cal. 821A, mechanic, self-winding, 21 jewels
- crystal exhibition back
- black dial with rose gold digits / markers
- stainless steel case, satined, special hand-finished case with the typical Zeppelin shape on the edge of the case,
- diameter: 40 mm, Height: 12 mm, weight: 70 g
- water-resistant up to 5 atm





**Ref.: 7656-3**

- movement Cal. 821A, mechanic, self-winding, 21 jewels
- crystal exhibition back
- amber dial with white luminous digits / indices SuperLuminova
- stainless steel case, polished, special hand-finished case with the typical Zeppelin shape on the edge of the case,
- diameter: 40 mm, Height: 12 mm, weight: 70 g
- water-resistant up to 5 atm



**Ref.: 7656-4**

- movement Cal. 821A, mechanic, self-winding, 21 jewels
- crystal exhibition back
- white dial with silver colored digits / markers
- stainless steel case, polished, special hand-finished case with the typical Zeppelin shape on the edge of the case,
- diameter: 40 mm, Height: 12 mm, weight: 70 g
- water-resistant up to 5 atm



**Ref.: 7656-5**

- movement Cal. 821A, mechanic, self-winding, 21 jewels
- crystal exhibition back
- beige dial with black digits / markers
- stainless steel case, polished, special hand-finished case with the typical Zeppelin shape on the edge of the case,
- diameter: 40 mm, Height: 12 mm, weight: 70 g
- water-resistant up to 5 atm





**Ref.: 7656M-1**

- movement Cal. 821A, mechanic, self-winding, 21 jewels
- crystal exhibition back
- white dial with gold colored digits / markers
- stainless steel case, polished, special hand-finished case with the typical Zeppelin shape on the edge of the case,
- diameter: 40 mm, Height: 12 mm, weight: 70 g
- water-resistant up to 5 atm



**Ref.: 7656M-2**

- movement Cal. 821A, mechanic, self-winding, 21 jewels
- crystal exhibition back
- black dial with rose gold digits / markers
- stainless steel case, satined, special hand-finished case with the typical Zeppelin shape on the edge of the case,
- diameter: 40 mm, Height: 12 mm, weight: 70 g
- water-resistant up to 5 atm



**Ref.: 7656M-3**

- movement Cal. 821A, mechanic, self-winding, 21 jewels
- crystal exhibition back
- amber dial with white luminous digits / indices SuperLuminova
- stainless steel case, polished, special hand-finished case with the typical Zeppelin shape on the edge of the case,
- diameter: 40 mm, Height: 12 mm, weight: 70 g
- water-resistant up to 5 atm





**Ref.: 7656M-5**

- movement Cal. 821A, mechanic, self-winding, 21 jewels
- crystal exhibition back
- beige dial with black digits / markers
- stainless steel case, polished, special hand-finished case with the typical Zeppelin shape on the edge of the case,
- diameter: 40 mm, Height: 12 mm, weight: 70 g
- water-resistant up to 5 atm



**Ref.: 7660-4**

- movement ETA Valgranges A07.161, mechanic, self-winding, 24 jewels, Swiss made
- big date power reserve indicator
- sapphire crystal, crystal exhibition back
- silver colored dial with black digits / markers
- Chronometer Certificate Sternwarte Glashütte - guarantees highest precision and accuracy of measurement even through extreme temperature variations
- stainless steel case, polished, special hand-finished case with the typical Zeppelin shape on the edge of the case,
- diameter: 42 mm, Height: 13 mm
- water-resistant up to 5 atm



*bottom view*

**Ref.: 7664-2**

- movement ETA 2826-2, mechanic, self-winding, 25 jewels, Swiss made
- big date
- crystal exhibition back
- black dial with white digits / markers
- 12 green luminous dots
- stainless steel case, polished, special hand-finished case with the typical Zeppelin shape on the edge of the case,
- diameter: 42 mm, Height: 13 mm
- water-resistant up to 5 atm





**Ref.: 7664M-2**

- movement ETA 2826-2, mechanic, self-winding, 25 jewels, Swiss made
- big date
- crystal exhibition back
- black dial with white digits / markers
- 12 green luminous dots
- stainless steel case, polished, special hand-finished case with the typical Zeppelin shape on the edge of the case,
- diameter: 42 mm, Height: 13 mm
- water-resistant up to 5 atm



**Ref.: 7666-1**

- movement Cal. 82S5, mechanic, self-winding
- Open Heart - a clip in the dial uncovers the balance
- crystal exhibition back
- white dial with black digits / markers
- stainless steel case
- diameter: 40 mm, Height: 12 mm
- water-resistant up to 5 atm



**Ref.: 7666-2**

- movement Cal. 82S5, mechanic, self-winding
- Open Heart - a clip in the dial uncovers the balance
- crystal exhibition back
- black dial with white digits / markers
- stainless steel case
- diameter: 40 mm, Height: 12 mm
- water-resistant up to 5 atm





**Ref.: 7666-5**

- movement Cal. 82S5, mechanic, self-winding
- Open Heart - a clip in the dial uncovers the balance
- crystal exhibition back
- beige dial with black digits / markers
- stainless steel case
- diameter: 40 mm, Height: 12 mm
- water-resistant up to 5 atm



**Ref.: 7666M-2**

- movement Cal. 82S5, mechanic, self-winding
- Open Heart - a clip in the dial uncovers the balance
- crystal exhibition back
- black dial with white digits / markers
- stainless steel case
- diameter: 40 mm, Height: 12 mm
- water-resistant up to 5 atm



**Ref.: 7668-2**

- movement Cal. 82S5, mechanic, self-winding
- Open Heart - a clip in the dial uncovers the balance
- crystal exhibition back
- black dial with white digits / markers
- stainless steel case
- diameter: 40 mm, Height: 12 mm
- water-resistant up to 5 atm





**Ref.: 7670-1**

- movement Cal. 6S21, quartz-controlled
- chronograph
- silver colored dial with black digits / markers
- stainless steel case, polished
- diameter: 42 mm
- water-resistant up to 5 atm



**Ref.: 7672-1**

- movement Cal. 6S21, quartz-controlled
- chronograph
- beige dial with black digits / markers
- stainless steel case, polished, rose gold coated
- diameter: 42 mm, Height: 12 mm
- water-resistant up to 5 atm



**Ref.: 7674-1**

- movement Cal. 6S21, quartz-controlled
- chronograph
- silver colored dial with black digits / markers
- stainless steel case, polished
- diameter: 42 mm
- water-resistant up to 5 atm





**Ref.: 7674-2**

- movement Cal. 6S21, quartz-controlled
- chronograph
- black dial with rose gold digits / markers
- stainless steel case, polished
- diameter: 42 mm
- water-resistant up to 5 atm



**Ref.: 7674M-2**

- movement Cal. 6S21, quartz-controlled
- chronograph
- black dial with rose gold digits / markers
- stainless steel case, polished
- diameter: 42 mm
- water-resistant up to 5 atm



**Ref.: 7676-2**

- movement Cal. 6S21, quartz-controlled
- chronograph
- black dial with white digits / markers
- stainless steel case, satined, rose gold coated
- diameter: 42 mm
- water-resistant up to 5 atm





**Ref.: 7678-1**

- movement Cal. 6S21, quartz-controlled
- chronograph
- white dial with black digits / markers
- stainless steel case, polished
- diameter: 42 mm
- water-resistant up to 5 atm



**Ref.: 7678-2**

- movement Cal. 6S21, quartz-controlled
- chronograph
- black dial with white digits / markers
- stainless steel case, polished
- diameter: 42 mm
- water-resistant up to 5 atm



**Ref.: 7678-5**

- movement Cal. 6S21, quartz-controlled
- chronograph
- beige dial with black digits / markers
- stainless steel case, polished
- diameter: 42 mm
- water-resistant up to 5 atm





*perspective view*



*pair view*

**Ref.: 7680-1**

- movement Ronda 5130.D, quartz-controlled, Swiss technology
- 12 hours totalizer alarm chronograph
- silver colored dial with black digits / markers
- stainless steel case, polished, special hand-finished case with the typical Zeppelin shape on the edge of the case,
- diameter: 42 mm, Height: 11 mm, weight: 100 g
- water-resistant up to 5 atm



*pair view*

**Ref.: 7680-2**

- movement Ronda 5130.D, quartz-controlled, Swiss technology
- 12 hours totalizer alarm chronograph
- black dial with white digits / markers
- stainless steel case, satined, special hand-finished case with the typical Zeppelin shape on the edge of the case,
- diameter: 42 mm, Height: 11 mm, weight: 100 g
- water-resistant up to 5 atm





**Ref.: 7680-3**

- movement Ronda 5130.D, quartz-controlled, Swiss technology
- 12 hours totalizer alarm chronograph
- white, in the dark blue shining dial with black digits / markers
- stainless steel case, satined, black PVD coated, special hand-finished case with the typical Zeppelin shape on the edge of the case,
- diameter: 42 mm, Height: 11 mm, weight: 100 g
- water-resistant up to 5 atm





**Ref.: 7680M-1**

- movement Ronda 5130.D, quartz-controlled, Swiss technology
- 12 hours totalizer alarm chronograph
- silver colored dial with black digits / markers
- stainless steel case, polished, special hand-finished case with the typical Zeppelin shape on the edge of the case,
- diameter: 42 mm, Height: 11 mm, weight: 100 g
- water-resistant up to 5 atm



**Ref.: 7680M-2**

- movement Ronda 5130.D, quartz-controlled, Swiss technology
- 12 hours totalizer alarm chronograph
- black dial with white digits / markers
- stainless steel case, satined, special hand-finished case with the typical Zeppelin shape on the edge of the case,
- diameter: 42 mm, Height: 11 mm, weight: 100 g
- water-resistant up to 5 atm





*perspective view*

**Ref.: 7682-2**

- movement ETA G15.261, quartz-controlled, Swiss made
- chronograph
- black dial with white digits / markers
- stainless steel case, satined, special hand-finished case with the typical Zeppelin shape on the edge of the case,
- diameter: 42 mm, Height: 14 mm, weight: 70 g
- water-resistant up to 5 atm





*perspective view*



*fragment view*

**Ref.: 7682-4**

- movement ETA G15.261, quartz-controlled, Swiss made
- chronograph
- silver colored dial with black digits / markers
- stainless steel case, satined, special hand-finished case with the typical Zeppelin shape on the edge of the case,
- diameter: 42 mm, Height: 14 mm, weight: 70 g
- water-resistant up to 5 atm



**Ref.: 7684-3**

- movement Ronda 5020.B, quartz-controlled, Swiss technology
- 12 hours totalizer big date
- amber dial with white digits / markers
- stainless steel case, polished, special hand-finished case with the typical Zeppelin shape on the edge of the case,
- diameter: 40 mm, Height: 11 mm, weight: 65 g
- water-resistant up to 5 atm



**Ref.: 7684-5**

- movement Ronda 5020.B, quartz-controlled, Swiss technology
- 12 hours totalizer big date
- beige dial with black digits / markers
- stainless steel case, polished, special hand-finished case with the typical Zeppelin shape on the edge of the case,
- diameter: 40 mm, Height: 11 mm, weight: 65 g
- water-resistant up to 5 atm





**Ref.: 7684M-3**

- movement Ronda 5020.B, quartz-controlled, Swiss technology
- 12 hours totalizer big date
- amber dial with white digits / markers
- stainless steel case, polished, special hand-finished case with the typical Zeppelin shape on the edge of the case,
- diameter: 40 mm, Height: 11 mm, weight: 65 g
- water-resistant up to 5 atm



**Ref.: 7686-1**

- movement Ronda 5020.B, quartz-controlled, Swiss technology
- 12 hours totalizer big date
- white dial with black digits / markers
- stainless steel case, polished, special hand-finished case with the typical Zeppelin shape on the edge of the case,
- diameter: 42 mm, Height: 11 mm, weight: 65 g
- water-resistant up to 5 atm



**Ref.: 7686-2**

- movement Ronda 5020.B, quartz-controlled, Swiss technology
- 12 hours totalizer big date
- black dial with white digits / markers
- stainless steel case, satined, special hand-finished case with the typical Zeppelin shape on the edge of the case,
- diameter: 42 mm, Height: 11 mm, weight: 65 g
- water-resistant up to 5 atm





**Ref.: 7686M-2**

- movement Ronda 5020.B, quartz-controlled, Swiss technology
- 12 hours totalizer big date
- black dial with white digits / markers
- stainless steel case, satined, special hand-finished case with the typical Zeppelin shape on the edge of the case,
- diameter: 42 mm, Height: 11 mm, weight: 65 g
- water-resistant up to 5 atm



**Ref.: 7690-1**

- movement Ronda 5020.B, quartz-controlled, Swiss technology
- 12 hours totalizer big date
- silver colored dial with black digits / markers
- 12 green luminous dots
- stainless steel case, polished, special hand-finished case with the typical Zeppelin shape on the edge of the case,
- diameter: 42 mm, Height: 11 mm, weight: 65 g
- water-resistant up to 5 atm



*perspective view*

**Ref.: 7690-2**

- movement Ronda 5020.B, quartz-controlled, Swiss technology
- 12 hours totalizer big date
- black dial with white digits / markers
- stainless steel case, polished, special hand-finished case with the typical Zeppelin shape on the edge of the case,
- diameter: 42 mm, Height: 11 mm, weight: 65 g
- water-resistant up to 5 atm





**Ref.: 7690M-1**

- movement Ronda 5020.B, quartz-controlled, Swiss technology
- 12 hours totalizer big date
- silver colored dial with black digits / markers
- stainless steel case, satined, special hand-finished case with the typical Zeppelin shape on the edge of the case,
- diameter: 42 mm, Height: 11 mm, weight: 65 g
- water-resistant up to 5 atm



**Ref.: 7690M-2**

- movement Ronda 5020.B, quartz-controlled, Swiss technology
- 12 hours totalizer big date
- black dial with white digits / markers
- stainless steel case, satined, special hand-finished case with the typical Zeppelin shape on the edge of the case,
- diameter: 42 mm, Height: 11 mm, weight: 65 g
- water-resistant up to 5 atm